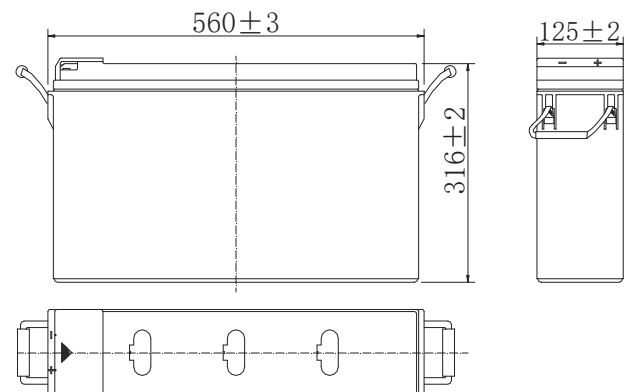
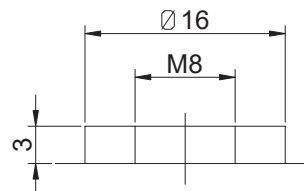


Specifications

Nominal Voltage		12 V
Capacity (25°C)	10HR(10.8V)	200 Ah
	5HR(10.5V)	174.5Ah
	3HR(9.60V)	154.8Ah
Dimension	Length	560 ± 3mm
	Width	125 ± 2mm
	Height	316 ± 2mm
	Total Height	323 ± 2mm
Approx. Weight		55 kg ± 4%
Terminal type		T11
Internal resistance (Fully charged, 25°C)		Approx. 4m Ω
Capacity affected by temperature (10HR)	40°C	102%
	25°C	100%
	0°C	85%
	-15°C	65%
Self-discharge (25°C)	3 month	Remaining Capacity: 91%
	6 month	Remaining Capacity: 82%
	12 month	Remaining Capacity: 65%
Nominal operating temperature		25°C ± 3°C (77°F ± 5°F)
Operating temperature range	Discharge	-15°C ~ 50°C (5°F ~ 122°F)
	Charge	-10°C ~ 50°C (14°F ~ 122°F)
	Storage	-20°C ~ 50°C (-4°F ~ 122°F)
Float charging voltage(25°C)		13.50 to 13.80V Temperature compensation: -18mV/°C
Cyclic charging voltage(25°C)		14.50 to 14.90V Temperature compensation: -30mV/°C
Maximum charging current		60A
Terminal material		Copper
Maximum discharge current		2000A(5 sec.)
Designed floating life(20°C)		12 years

- ◆ Absorbent glass mat technology; ◆ Recognized by RoHS & CE;
- ◆ ABS container.


Dimensions

Terminal

Terminal T11
Constant Current Discharge Characteristics : A (25°C)

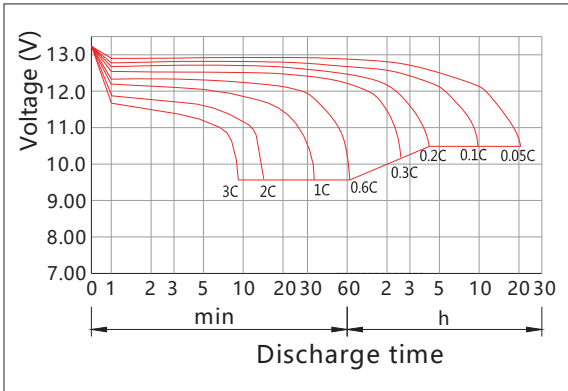
F.V/Time	15MIN	30MIN	1HR	2HR	3HR	4HR	5HR	8HR	10HR	20HR
1.60V	345.1	214.6	122.2	72.8	56.4	44.3	37.7	25.4	21.1	11.0
1.65V	329.9	206.1	118.0	70.5	54.7	43.1	36.8	25.1	20.8	10.9
1.70V	309.0	197.0	114.2	68.2	53.2	42.0	35.8	24.7	20.5	10.7
1.75V	287.6	188.2	110.0	65.8	51.6	40.9	34.9	24.3	20.3	10.6
1.80V	265.5	179.9	105.8	63.4	50.0	39.7	34.0	23.9	20.0	10.5
1.85V	220.3	155.0	94.9	58.1	46.2	36.9	31.7	22.5	18.8	10.0

Constant Power Discharge Characteristics : WPC (25°C)

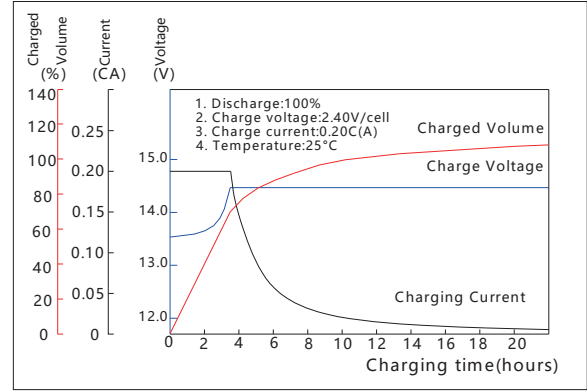
F.V/Time	15MIN	30MIN	1HR	2HR	3HR	4HR	5HR	8HR	10HR	20HR
1.60V	603.3	389.8	229.6	138.0	107.7	85.1	72.7	49.5	41.5	21.7
1.65V	585.3	378.2	223.0	134.2	104.9	83.1	71.1	49.1	41.0	21.4
1.70V	556.4	365.1	217.1	130.5	102.5	81.2	69.5	48.4	40.5	21.2
1.75V	525.3	352.6	210.5	126.5	99.8	79.4	68.0	47.8	40.0	21.0
1.80V	491.9	340.4	203.6	122.6	97.1	77.4	66.5	47.1	39.5	20.8
1.85V	414.0	296.1	183.7	113.0	90.2	72.2	62.2	44.4	37.3	19.7

Note: The above characteristics data can be obtained within three charge/discharge cycles.

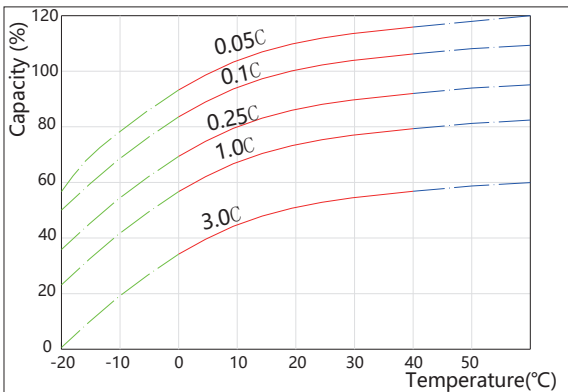
Discharge Characteristics(25°C)



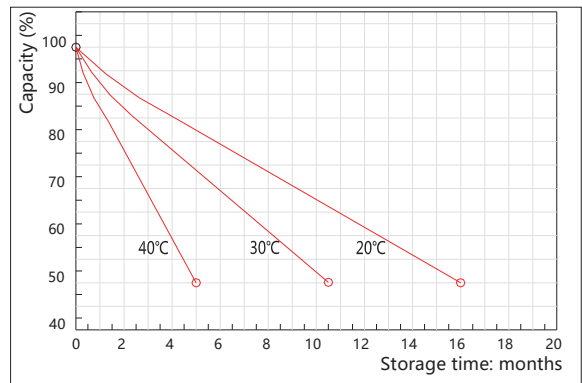
Charging Characteristics(25°C)



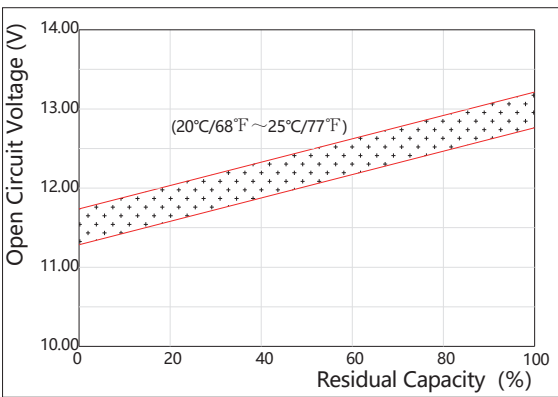
Effect of Temperature on Capacity



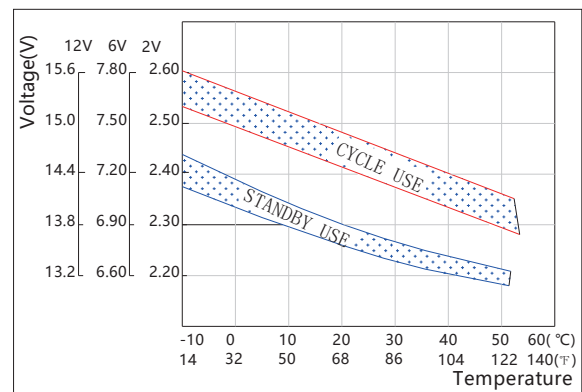
Self-discharge Characteristics



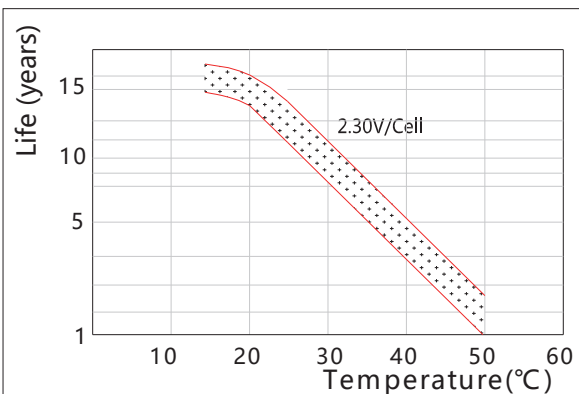
The Relationship for Open Circuit Voltage and Residual Capacity (25°C)



The Relationship for Charging Voltage and Temperature



Floating Life on Temperature



Cycle Life on D.O.D(25°C)

