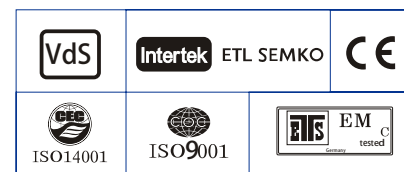


**Specification**

Nominal Voltage	12V	
Nominal Capacity(10HR)	120AH	
Dimension	Length	408± 3mm (12.99 inches)
	Width	177 ± 2mm (6.81 inches)
	Container Height	225 ± 3mm (8.35 inches)
	Total Height (with Terminal)	225 ± 3mm (9.57 inches)
Terminal	T11	
Container Material	ABS	
Rated Capacity	124.8AH/6.2A	(20hr, 1.80V/cell, 25°C/77°F)
	120.0 AH/12.0A	(10hr, 1.75V/cell, 25°C/77°F)
	103.2AH/20.64A	(5hr, 1.75V/cell, 25°C/77°F)
	93.6AH/31.2A	(3hr, 1.75V/cell, 25°C/77°F)
	73.2AH/73.2A	(1hr, 1.67V/cell, 25°C/77°F)
Max. Discharge Current	1300A (5s)	
Internal Resistance	Approx 4.0mΩ	
Operating Temp.Range	Discharge : -20 ~55°C (-4 ~131°F)	
	Charge : 0~40°C (32~104°F)	
	Storage : -20 ~50°C (-4 ~122°F)	
Nominal Operating Temp. Range	25±3°C (77 ±5°F)	
Cycle Use	Initial Charging Current less than 20.0A.Voltage	
	14.4V~15.0V at 25°C(77°F)Temp. Coefficient -30mV/°C	
Standby Use	No limit on Initial Charging Current Voltage	
	13.5V~13.8V at 25°C(77°F)Temp. Coefficient -20mV/°C	
Capacity affected by Temperature	40°C (104°F)	103%
	25°C (77°F)	100%
	0°C (32°F)	86%
Self Discharge	GEL series batteries may be stored for up to 9 months	
	at 25°C(77°F) and then a freshening charge is required. For higher temperatures the time interval will be shorter.	


**Applications**

- ◆ Telecommunications
- ◆ Solar system
- ◆ Wind power system
- ◆ Engine starting
- ◆ Wheelchair
- ◆ Floor cleaning machines
- ◆ Golf trolley
- ◆ Boats


**Constant Current Discharge (Amperes) at 25°C (77°F)**

F.V/Time	20min	30min	45min	1h	2h	3h	4h	5h	6h	7h	8h	9h	10h	20h
1.85V/cell	84.6	66.4	50.7	42.4	26.9	20.5	17.0	14.7	12.3	10.9	9.8	8.96	8.47	4.61
1.80V/cell	96.9	74.2	55.9	46.8	29.1	22.0	18.0	15.4	12.9	11.4	10.3	9.42	8.85	4.80
1.75V/cell	108.9	81.6	60.4	50.1	30.9	23.2	18.9	16.0	13.3	11.8	10.6	9.7	9.00	4.90
1.70V/cell	117.3	87.4	64.1	53.0	32.7	24.2	19.5	16.5	13.8	12.2	10.9	10.0	9.23	4.96
1.67V/cell	122.1	90.8	66.4	55.0	33.6	24.9	20.0	16.8	14.0	12.3	11.1	10.1	9.34	5.01
1.60V/cell	132.3	97.2	71.3	58.4	34.9	25.9	20.7	17.4	14.4	12.6	11.3	10.3	9.53	5.08

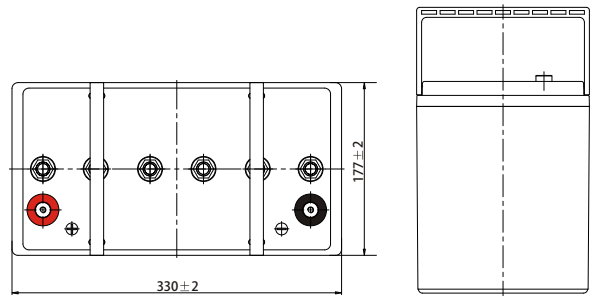
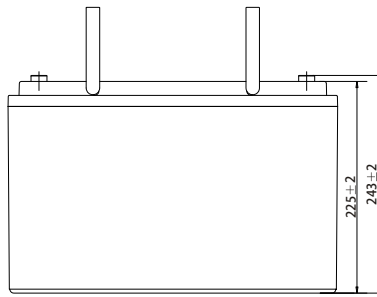
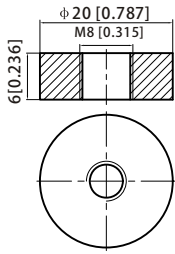
**Constant Power Discharge (Watts/cell) at 25°C (77°F)**

F.V/Time	20min	30min	45min	1h	2h	3h	4h	5h	6h	7h	8h	9h	10h	20h
1.85V/cell	161.9	128.0	98.2	82.6	52.6	40.2	33.4	28.9	24.3	21.6	19.5	17.8	16.9	9.20
1.80V/cell	183.0	141.6	107.5	90.7	56.6	42.9	35.3	30.3	25.4	22.5	20.4	18.7	17.6	9.57
1.75V/cell	203.4	154.4	115.4	96.5	59.8	45.2	36.8	31.4	26.3	23.3	21.0	19.3	17.9	9.75
1.70V/cell	216.8	163.9	121.7	101.6	63.1	46.9	37.9	32.3	27.1	24.0	21.6	19.7	18.3	9.86
1.67V/cell	223.1	168.5	125.1	104.8	64.4	48.2	38.7	32.8	27.5	24.3	21.9	20.0	18.5	9.95
1.60V/cell	239.1	178.7	133.4	110.7	66.7	49.9	40.1	33.8	28.1	24.7	22.2	20.3	18.9	10.1

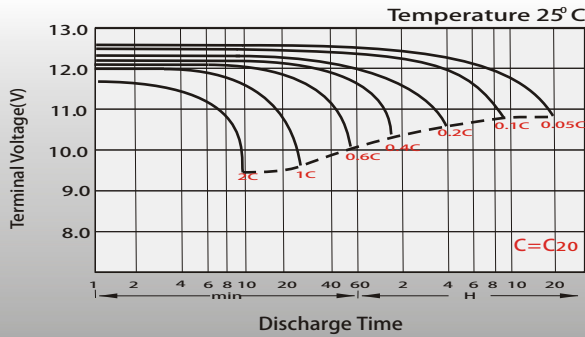
# Dimensions

## T11 Terminal

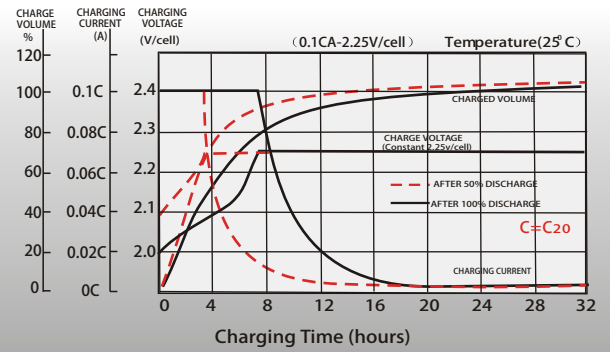
Unit: mm [inches]



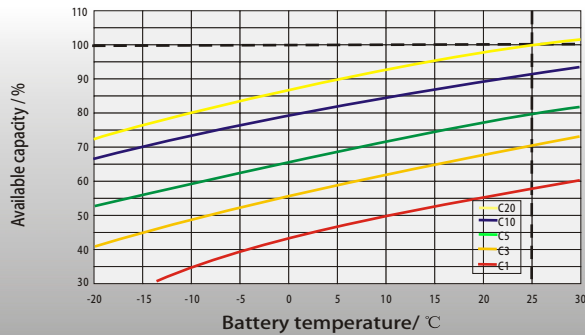
## Discharge Characteristics



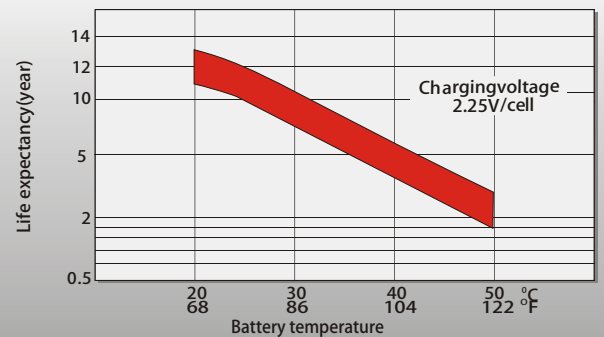
## Float Charging Characteristics



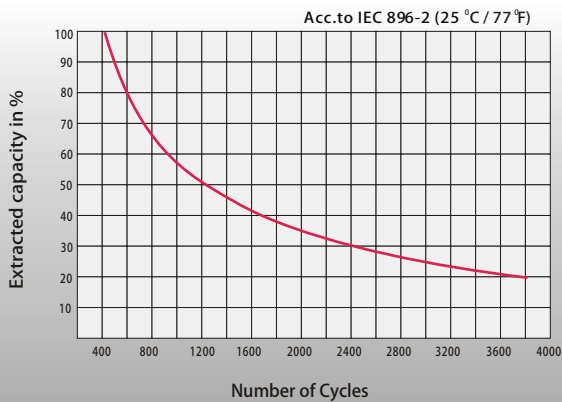
## Temperature Effects in Relation to Battery Capacity



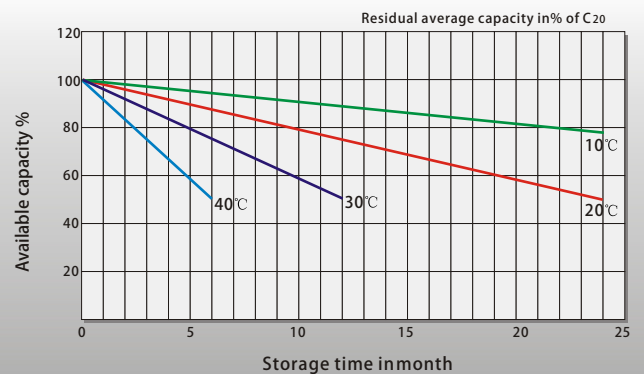
## Effect of Temperature on Long Term Float Life



## Cycle Life in Relation to Depth of Discharge



## General Relation of Capacity VS. Storage Time



## Contact US

### Greensun Solar Energy Tech Co., Limited

- \* Add: No 2000 Changjiang West Road, Shushan District Hefei China
- \* Email: info@greensunpv.com
- \* Phone: 0551-69866216 Fax: 0551-69866218 Mob: 0086-158 5511 0194
- \* Web: <https://www.greensunpv.com> & <https://greensunpv.en.alibaba.com>