



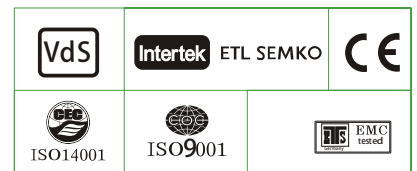
Specification

Nominal Voltage	2V	
Nominal Capacity(10HR)	800.0AH	
Dimensions	Length	410±3mm (16.14 inches)
	Width	175±2mm (6.89 inches)
	Container Height	330±3mm (12.99 inches)
	Total Height (with Terminal)	350±3mm (13.78 inches)
Approx Weight	Approx 50.5 kg (111.3lbs)	
Terminal	T11	
Container Material	ABS	
Rated Capacity	840.0 AH/42.0A	(20hr, 1.80V/cell, 25°C/77°F)
	800.0 AH/80.0A	(10hr, 1.80V/cell, 25°C/77°F)
	696.0 AH/139.2A	(5hr, 1.75V/cell, 25°C/77°F)
	604.8 AH/201.6A	(3hr, 1.75V/cell, 25°C/77°F)
	485.6 AH/485.6A	(1hr, 1.60V/cell, 25°C/77°F)
Max. Discharge Current	6400A (5s)	
Internal Resistance	Approx 0.5mΩ	
Operating Temp. Range	Discharge	-15~50°C (5~122°F)
	Charge	0~40°C (32~104°F)
	Storage	-15~40°C (5~104°F)
Nominal Operating Temp. Range	25±3°C (77±5°F)	
Cycle Use	Initial Charging Current less than 240.0A. Voltage	2.4V~2.5V at 25°C(77°F)Temp. Coefficient -5mV/°C
	Standby Use	No limit on Initial Charging Current Voltage 2.25V~2.3V at 25°C(77°F)Temp. Coefficient -3mV/°C
Capacity affected by Temperature	40°C (104°F)	103%
	25°C (77°F)	100%
	0°C (32°F)	86%
Self Discharge	GFM series batteries may be stored for up to 6 months at 25°C(77°F) and then a freshening charge is required. For higher temperatures the time interval will be shorter.	



Applications

- ◆ Tele-communication central station(wired or cellular)
- ◆ Power system communication, military communication, etc.
- ◆ Network communication including: data transmission, television signal transmission, etc.
- ◆ Uninterruptable Power System (UPS- for Telecom)



Constant Current Discharge (Amperes) at 25°C (77°F)

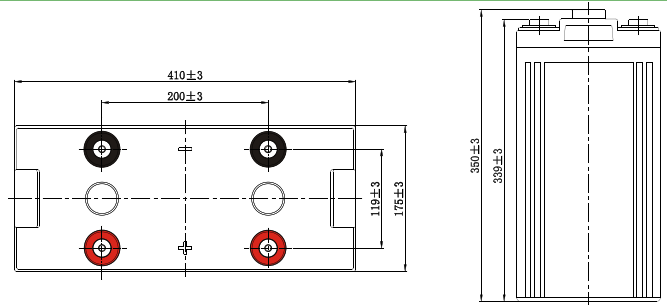
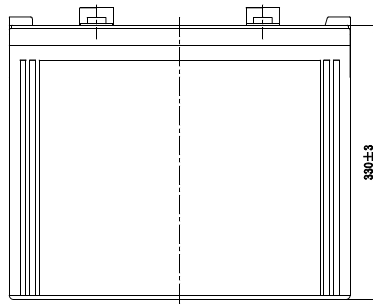
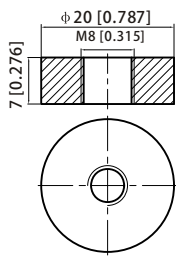
F.V/Time	30min	45min	1h	2h	3h	4h	5h	6h	8h	10h	20h
1.85V/cell	613.4	486.4	399.2	239.8	185.3	152.2	129.6	113.2	91.2	76.4	40.5
1.80V/cell	658.2	511.7	424.0	253.0	194.4	159.0	135.0	118.3	94.7	80.0	42.0
1.75V/cell	697.0	538.1	442.4	263.5	201.6	164.4	139.2	121.1	96.5	80.8	42.4
1.70V/cell	731.3	558.3	457.9	271.2	206.9	168.0	141.6	123.2	98.0	81.6	42.8
1.65V/cell	767.2	582.7	474.4	279.4	211.5	171.6	144.6	125.3	99.4	82.6	43.4
1.60V/cell	793.6	598.4	485.6	286.0	216.0	174.0	146.7	127.1	100.7	83.6	43.9

Constant Power Discharge (Watts) at 25°C (77°F)

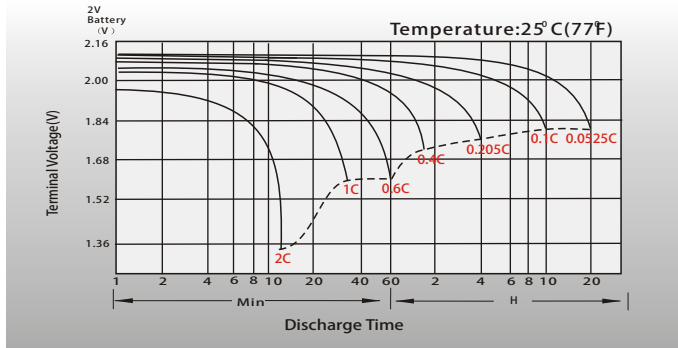
F.V/Time	30min	45min	1h	2h	3h	4h	5h	6h	8h	10h	20h
1.85V/cell	1172.3	935.2	772.2	466.4	362.2	298.5	255.3	223.7	181.0	152.0	80.7
1.80V/cell	1247.8	977.4	815.6	489.7	378.1	310.8	264.9	232.7	187.4	158.9	83.5
1.75V/cell	1311.3	1021.7	847.2	508.0	391.1	320.3	272.1	237.5	190.5	160.3	84.2
1.70V/cell	1364.3	1052.8	872.2	520.7	399.9	325.9	276.0	241.3	193.3	161.7	85.0
1.65V/cell	1420.5	1092.5	898.6	534.1	406.9	331.8	280.9	244.8	195.5	163.5	86.0
1.60V/cell	1454.7	1111.5	913.4	543.4	413.5	335.0	283.8	247.4	197.7	165.2	86.9

Dimensions

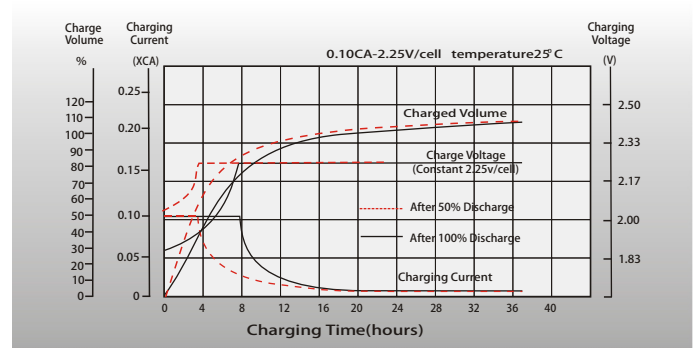
T11 Terminal Unit:mm [inches]



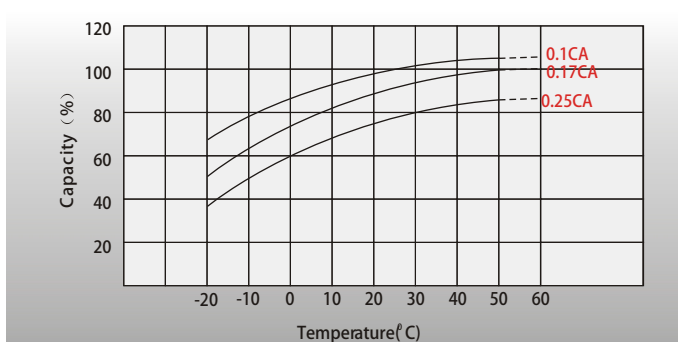
Discharge Characteristics



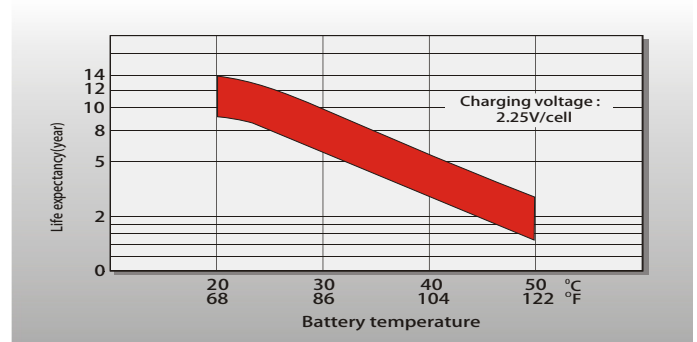
Float Charging Characteristics



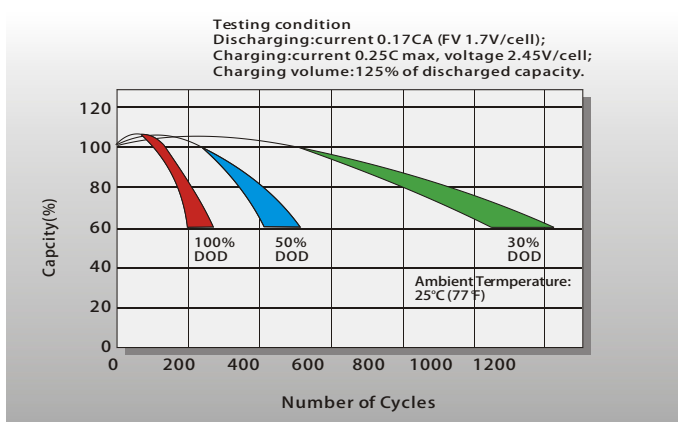
Temperature Effects in Relation to Battery Capacity



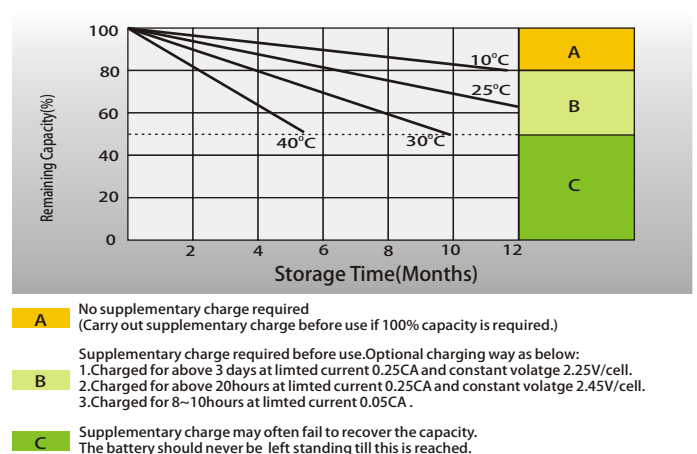
Effect of Temperature on Long Term Float Life



Cycle Life in Relation to Depth of Discharge



Self Discharge Characteristics



Contact US

Greensun Solar Energy Tech Co., Limited

* Add: No 2000 Changjiang West Road, Shushan District Hefei China

* Email: info@greensunpv.com

* Phone: 0551-69866216 Fax: 0551-69866218 Mob: 0086-158 5511 0194

* Web: <https://www.greensunpv.com> & <https://greensunpv.en.alibaba.com>